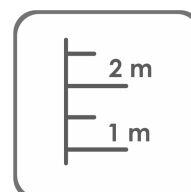
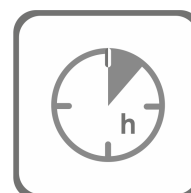


**STL001**

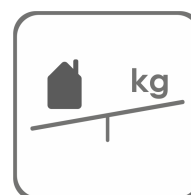
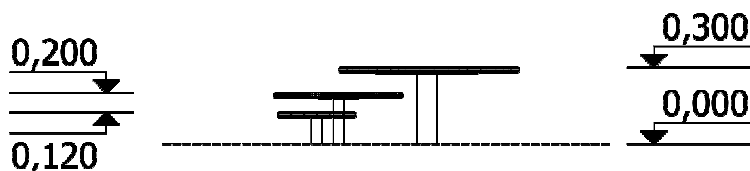
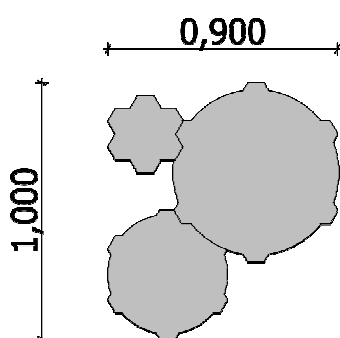
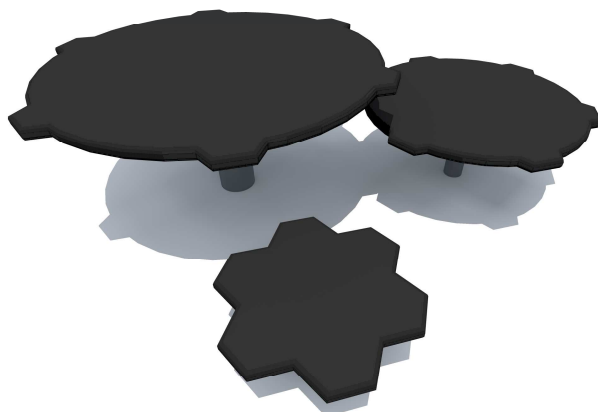
PRODUCT DATA SHEET

SIA "Jūrmalas Mežaparki"1 Garkalnes street, Jūrmala
+371 6773 2317, www.jmp.lv

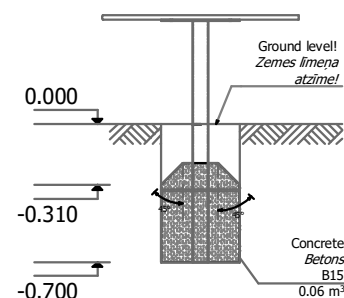
bērnu rotaļlietu izstrādātāji

Category:Parameters:**a= 900 mm**
b= 1 000 mm
h= 300 mm**Assembly**
1,5 h

(without concreting and digging)

**Weight**
15,1 kgUsed materials:

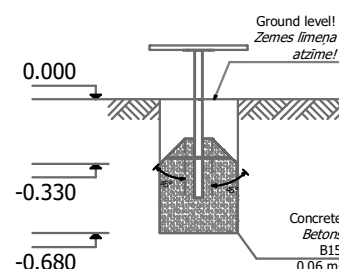
- * Glued pine wood beam - impregnated (green); Impregnated board;
- * Three-layer HPL (high pressure laminate);
- * Water-resistant, abrasive plywood;
- * Stainless steel;
- * PP (polypropylene);

Concrete:Spare parts availability:

The spare parts and spare parts can be purchased at SIA "Jūrmalas Mežaparks". factory within 3 days after the customer's request after warranty period. Spare parts are available for 10 years. erves share availability.

Requirements:

The equipment-agility may only be used after two days when the concrete is completely dry.
The equipment-agility is fixed (mounted) at the installation site

Transportation:In production since:
19.05.2022.

SIA "Jūrmalas Mežaparks" reserves the right to change the items described in this document without prior notice.

Manufactured according:

