



# STL010

## PRODUCT DATA SHEET

SIA "Jūrmalas Mežaparki"  
 1 Garkalnes street, Jūrmala  
 +371 6773 2317, www.jmp.lv

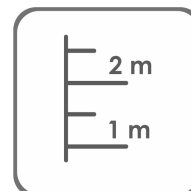


būvniecības iekārtas ražotājs

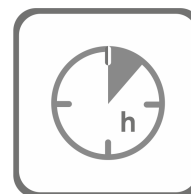
Category:



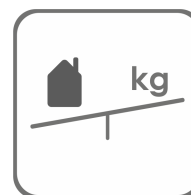
Parameters:



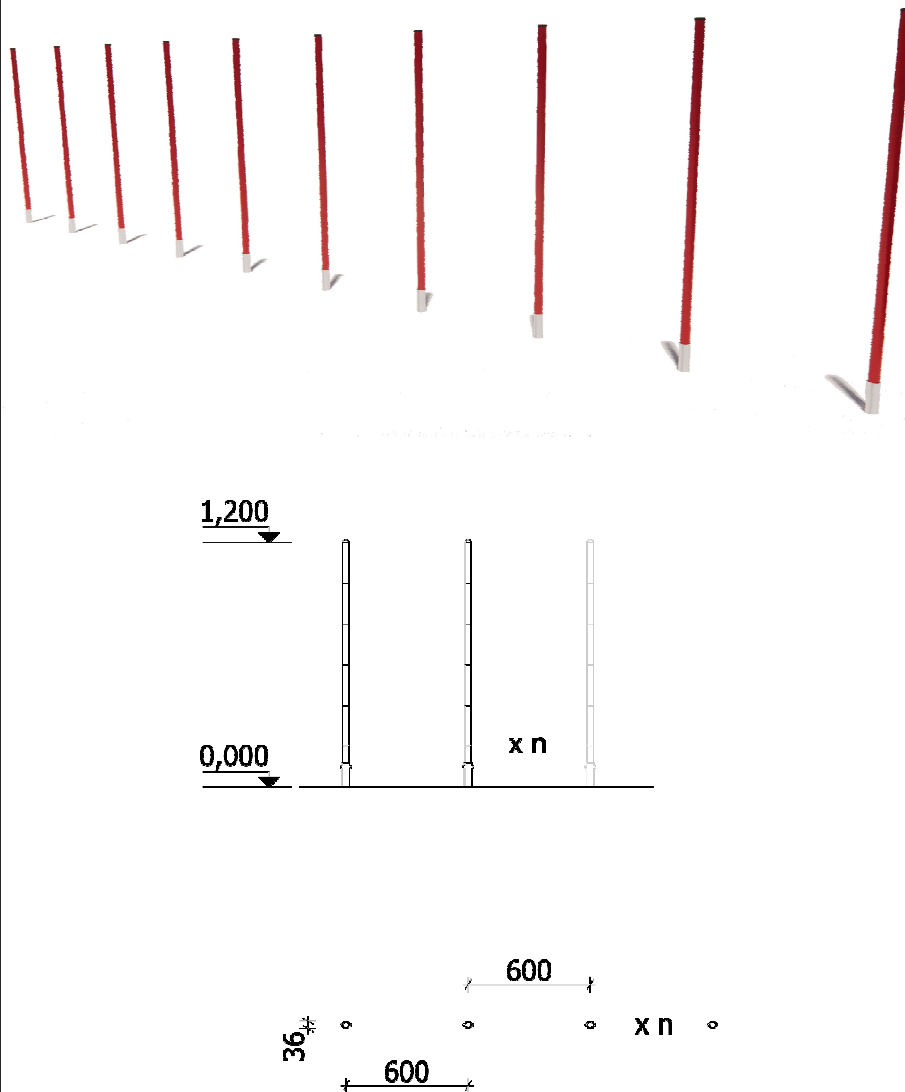
a= n.. mm  
 b= 36 mm  
 h= 1 200 mm



Assembly  
**0,5 h**  
 (without concreting and digging)



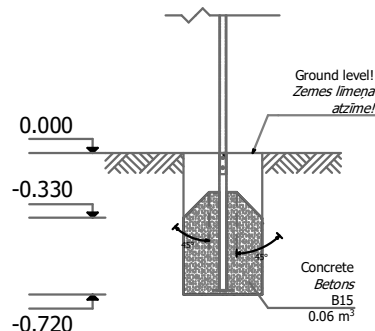
Weight  
**4,5 kg**  
 (per item)



Used materials:

Concrete:

- \* Glued pine wood beam - impregnated (green); Impregnated board;
- \* Three-layer HPL (high pressure laminate);
- \* Water-resistant, abrasive plywood;
- \* Stainless steel;
- \* PP (poproplylene);



Spare parts availability: The spare parts and spare parts can be purchased at SIA "Jūrmalas Mežaparks". factory within 3 days after the customer's request after warranty period. Spare parts are available for 10 years. erves share availability.

Requirements: The equipment-agility may only be used after two days when the concrete is completely dry. The equipment-agility is fixed (mounted) at the installation site

Transportation:

In production since:  
 19.05.2022.

SIA "Jūrmalas Mežaparks" reserves the right to change the items described in this document without prior notice.

Manufactured according:

