

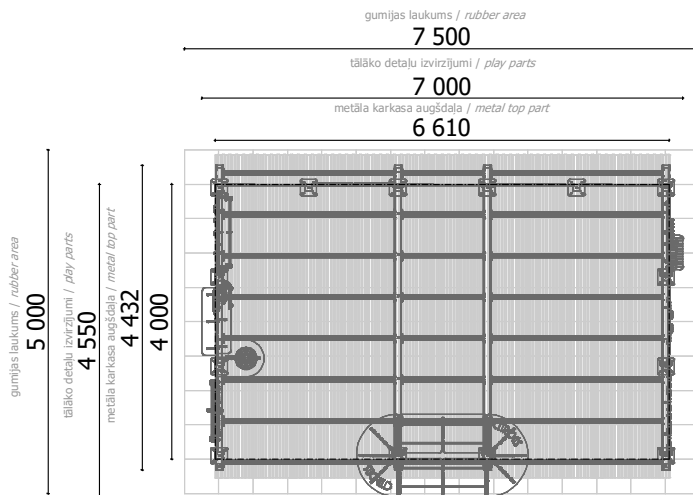
Shed made of steel metal and wood, HDPE 500 and plastic parts.



25
children



22 h
(without excavation and
concreting)



Length: **6 610 mm / 7 000 mm**
Width: **4 000 mm / 4 820 mm**
Height: **3 245 mm / 3 300 mm**

Length of Synthetic surface: **7 500 mm**
Width of Synthetic surface: **5 000 mm**
Required safety area: **37,50 m²**

(Install shock absorbing material according to
EN 1176:2017)

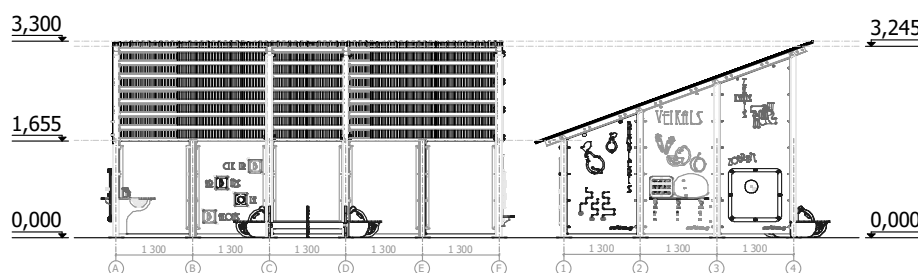
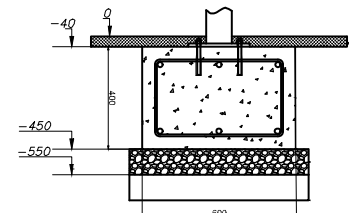
Shed is secured with stainless steel screws on the pre-prepared and encased concrete footing at the installation site.

Shed may be used only after two days, when the concrete is fully cured and the unit is fully installed. Installation and during concreting safety zone must not be children!

Equipment safety checkings must be performed once in a week in high vandalism risk areas.

Maintenance are required once in every 3 months, depending on usage

Foundation should be accessible for maintenance.



Transportation:

One (1) palette 1000 x 3000 x 500 mm;
One (1) palette 1190 x 3000 x 1000 mm

Spare parts:

All needed spare parts and elements, when warranty time expires can be ordered in Jūrmalas Mežaparki Ltd., and all the goods will be ready for delivery in 5 working days.

According to EN 1176:2017

Manufactured
according:

