



**STL001**

PRODUCT DATA SHEET

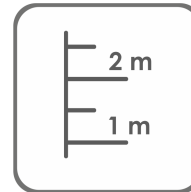
SIA "Jūrmalas Mežaparki"  
1 Garkalnes street, Jūrmala  
+371 6773 2317, www.jmp.lv



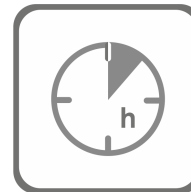
Category:



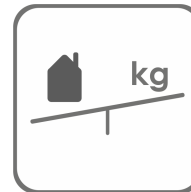
Parameters:



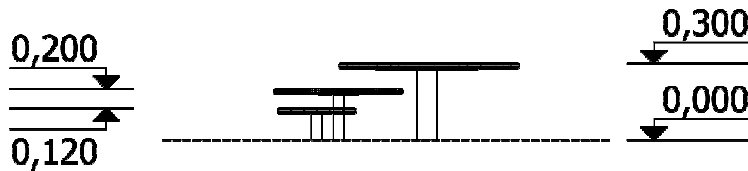
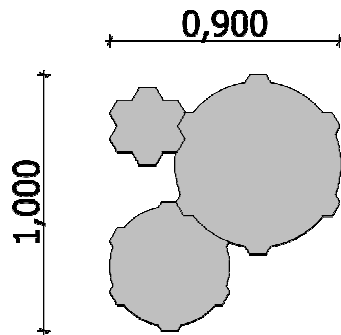
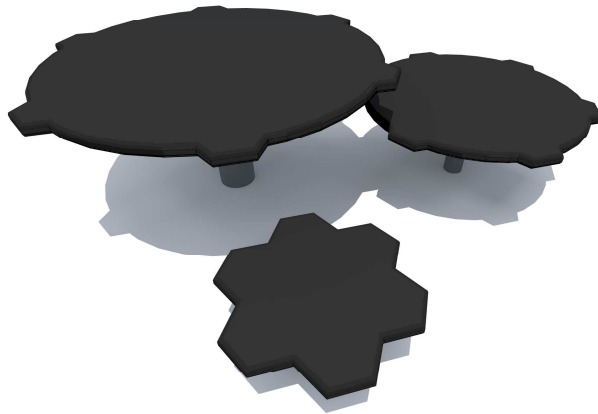
a= 900 mm  
b= 1 000 mm  
h= 300 mm



Assembly  
**1,5 h**  
(without concreting and digging)



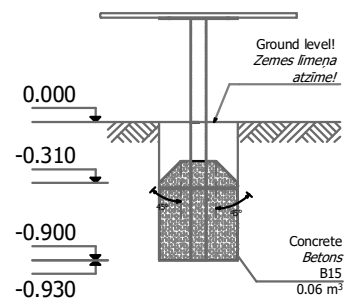
Weight  
**15,1 kg**



Used materials:

Concrete:

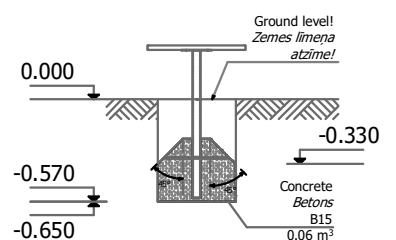
- \* Glued pine wood beam - impregnated (green); Impregnated board;
- \* Three-layer HPL (high pressure laminate);
- \* Water-resistant, abrasive plywood;
- \* Stainless steel;
- \* PP (poproplylene);



Spare parts availability: The spare parts and spare parts can be purchased at SIA "Jūrmalas Mežaparks". factory within 3 days after the customer's request after warranty period. Spare parts are available for 10 years. erves share availability.

Requirements: The equipment-agility may only be used after two days when the concrete is completely dry. The equipment-agility is fixed (mounted) at the installation site

Transportation:



In production since:  
19.05.2022.

SIA "Jūrmalas Mežaparks" reserves the right to change the items described in this document without prior notice.

Manufactured according:

