



STL014

PRODUCT DATA SHEET

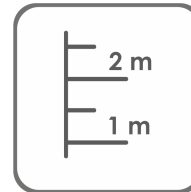
SIA "Jūrmalas Mežaparki"
 1 Garkalnes street, Jūrmala
 +371 6773 2317, www.jmp.lv



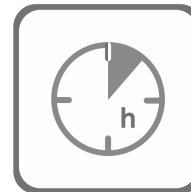
Category:



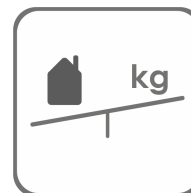
Parameters:



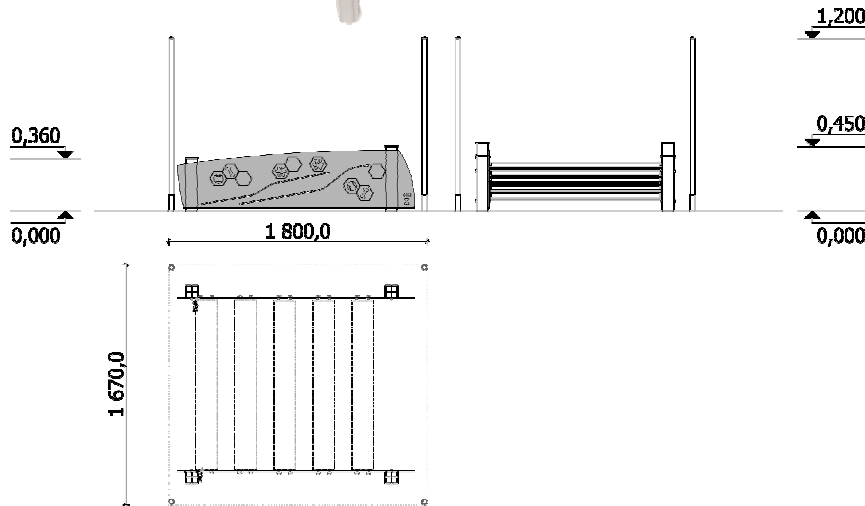
a= **1 800 mm**
 b= **1 670 mm**
 h= **1 200 mm**



Assembly
5 h
 (without concreting and digging)



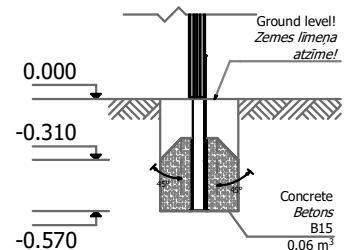
Weight
39,1 kg



Used materials:

- * Glued pine wood beam - impregnated (green); Impregnated board;
- * Three-layer HPL (high pressure laminate);
- * Water-resistant, abrasive plywood;
- * Stainless steel;
- * PP (poproplylene);

Concrete:



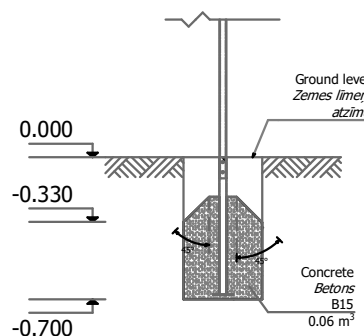
Spare parts availability:

The spare parts and spare parts can be purchased at SIA "Jūrmalas Mežaparks". factory within 3 days after the customer's request after warranty period. Spare parts are available for 10 years. erves share availability.

Requirements:

The equipment-agility may only be used after two days when the concrete is completely dry.
 The equipment-agility is fixed (mounted) at the installation site

Transportation:



In production since:
 19.05.2022.

SIA "Jūrmalas Mežaparks" reserves the right to change the items described in this document without prior notice.

Manufactured according:

