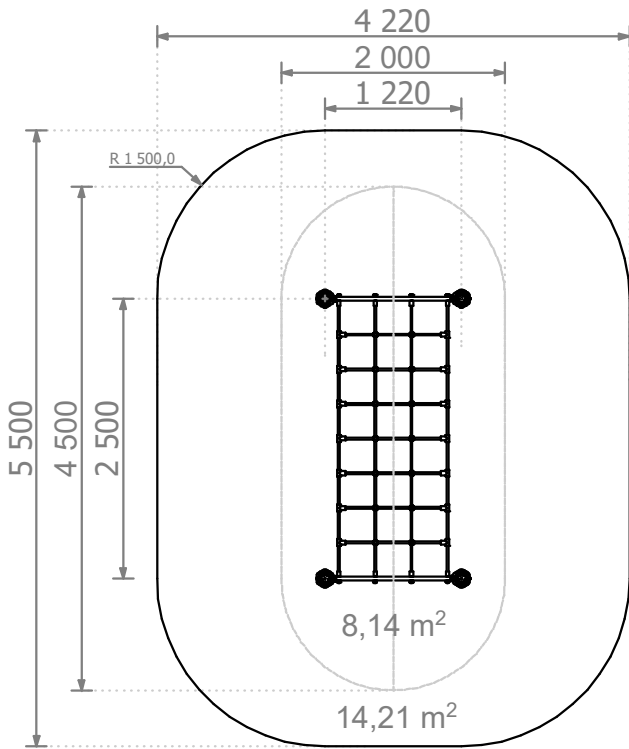


WRK 40

PRODUCT DATA SHEET

Jūrmalas Mežaparki Ltd.
1 Garkalnes street, Jūrmala
+371 6773 2317, www.jmp.lv



Length: **1 220 mm**
Width: **2 500 mm**
Height: **950 mm**
Length of safety area: **4 220 mm**
Width of safety area: **5 500 mm**
Required safety area: **21,28 m²**



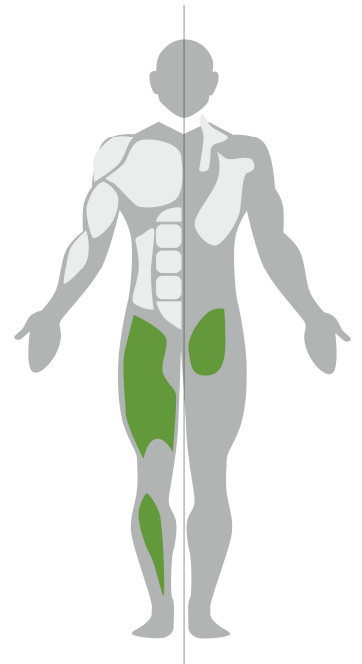
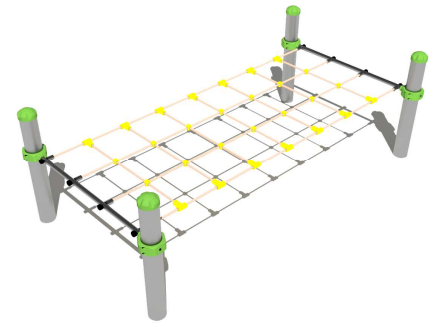
1,40 m
required user
height from



1
users



0,71 m
height of fall

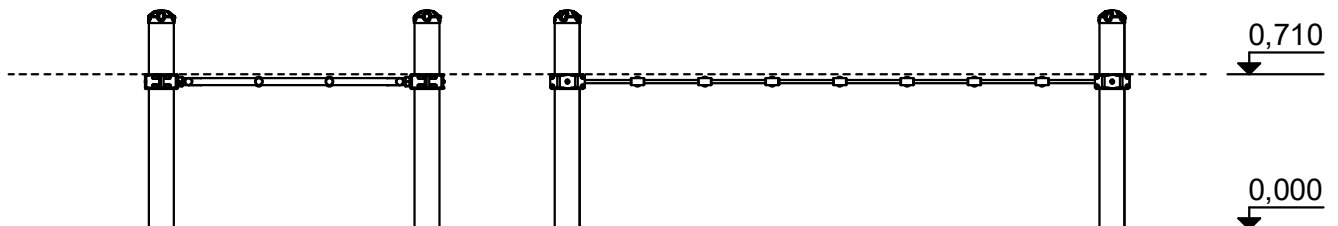
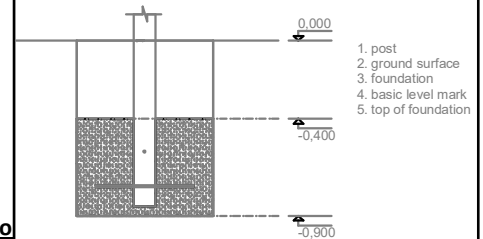


Metal gymnastic complex is intended for PUBLIC use outdoors.
Gymnastic equipment is suitable by concreting the steel foundation in planned equipment location. Equipment is suitable for use after two days of concreting when the foundation is totally solid. During assembly no user are allowed in the area.

Equipment safety checks must be performed once a week in high vandalism risk areas.

Maintenance is required once in every 3 months, depending on usage.

Surface type and its thickness must comply with EN 1177 standard requirements taking into account the fall height of the equipment



According to EN 16630:2015

Manufactured
according to:
07.11.2019.

