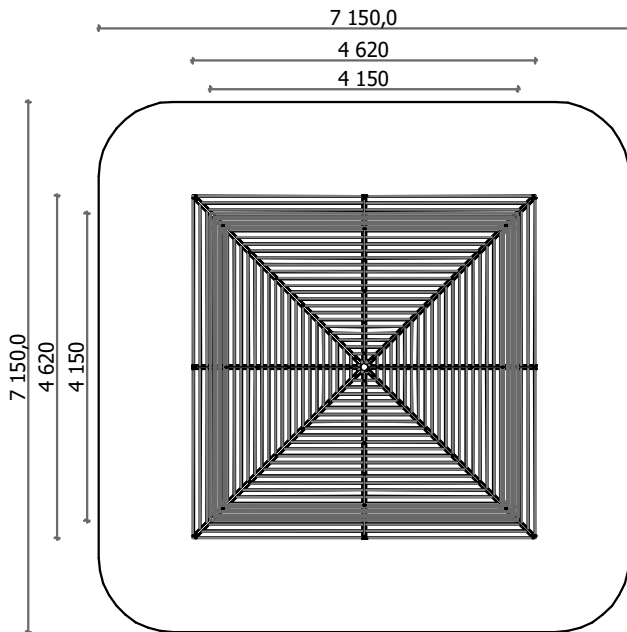
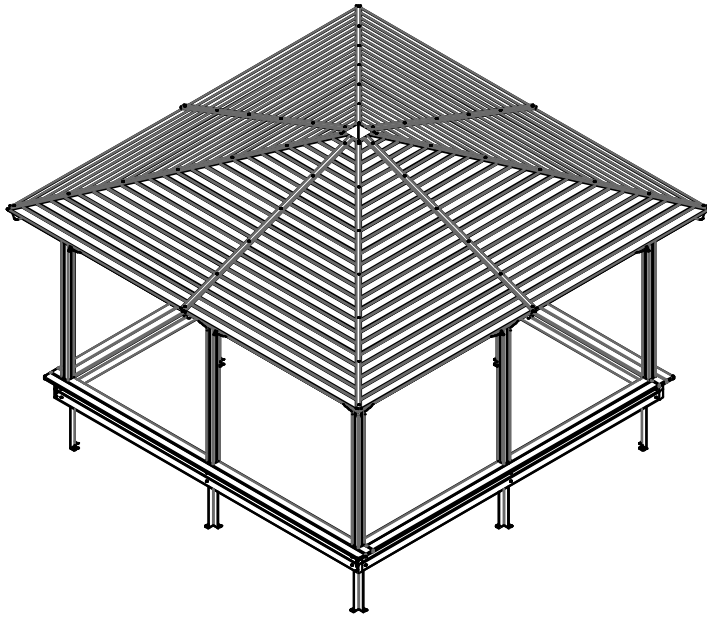


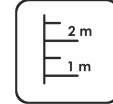
Construction is made from glued wood, connectors - stainless and galvanized steel metal.



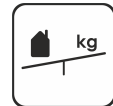
25
children



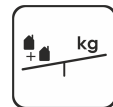
< 6
age



0,25 m
height of fall



16 kg
(heaviest part)



350 kg



5 h
(without excavation and concreting)

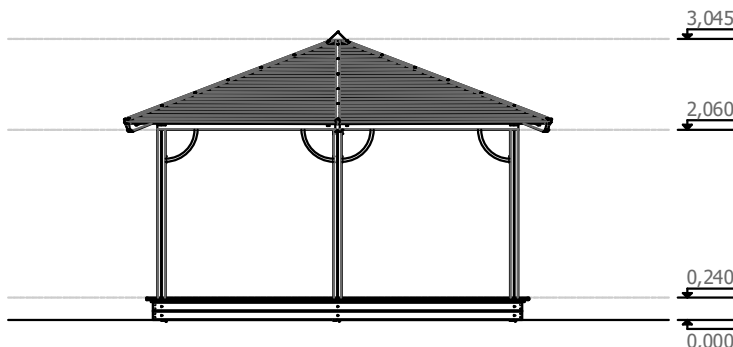
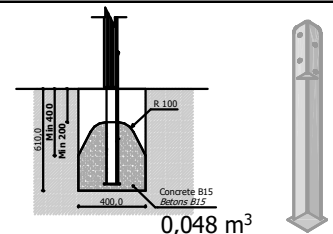
Length: **4 150 mm / 4 620 mm**
Width: **4 150 mm / 4 620 mm**
Height: **3 045 mm**

Length of safety area: **7 150 mm**
Width of safety area: **7 150 mm**
Required safety area: **50,27 m² / sand 15,28 m²**
50,27 m² / smilts 15,28 m²
(Install shock absorbing material according to EN 1176:2017)

Sanbox steel foundation is concreted in the ground at the planned location. The equipment can be used after two days when the concrete becomes solid. During assembly no children are allowed in the area. Foundation should be accessible for maintenance.

Equipment safety checkings must be performed once in a week in high vandalism risk area.

Maintenance is required once in every 3 months, depending on usage.



Transportation:
1 (one) palette:
4 200 x 1 000 x 500 mm

Spare parts:
All needed spare parts and elements, when warranty time expires can be ordered in Jūrmalas Mežaparki Ltd., and all the goods will be ready for delivery in 5 working days.